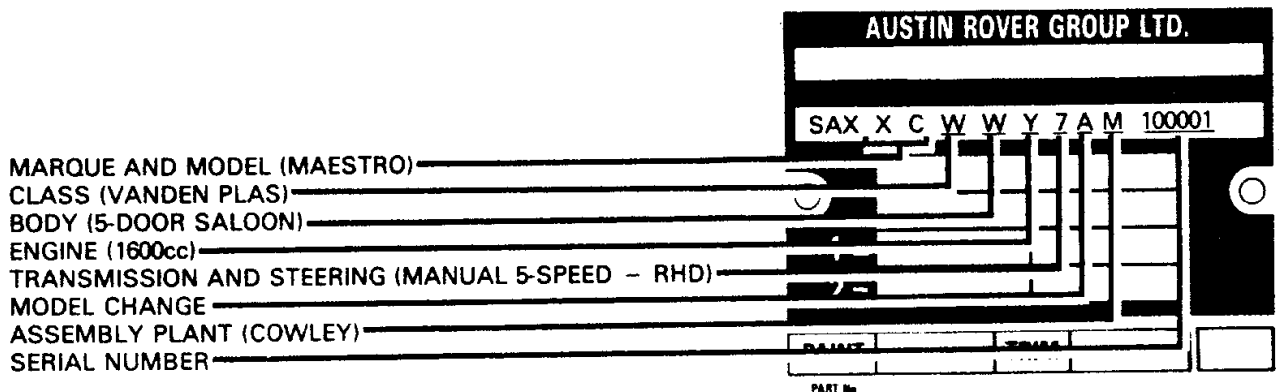


VEHICLE IDENTIFICATION NUMBERING - V.I.N.

The V.I.N. number comprises a series of letters and numbers presenting in code the marque, model, class, body, engine, transmission, steering, model change, assembly plant and serial number.

<p style="text-align: center;">1st TO 5th PREFIX LETTERS (MARQUE AND MODEL)</p> <p style="text-align: center;">SAX XC - MAESTRO</p>	<p style="text-align: center;">6th PREFIX LETTER (CLASS)</p> <p>D - 1.3 CITY H - 1.3 AND CITY X M - 1.3L AND 1.6L P - 1.6HLS S - 1.3HL, 1.3HLE AND 1.6HL T - MG V - 1.6 AUTOMATIC W - VANDEN PLAS</p>		
<p style="text-align: center;">7th PREFIX LETTER (BODY)</p> <p>F - 500 VAN G - 700 VAN W - 5-DOOR SALOON</p>	<p style="text-align: center;">8th PREFIX LETTER (ENGINE)</p> <p>D - 1300cc E - 1300cc ECONOMY U - 2000cc INJECTION Y - 1600cc</p>		
<p style="text-align: center;">9th PREFIX NUMBER (TRANSMISSION AND STEERING)</p> <table style="width: 100%; border: none;"> <tr> <td style="width: 50%; border: none;"> <p>1 - MANUAL 4-SPEED - RHD 3 - AUTOMATIC - RHD</p> </td> <td style="width: 50%; border: none;"> <p>2 - MANUAL 4-SPEED - LHD 7 - MANUAL 5-SPEED - RHD 8 - MANUAL 5-SPEED - LHD</p> </td> </tr> </table>		<p>1 - MANUAL 4-SPEED - RHD 3 - AUTOMATIC - RHD</p>	<p>2 - MANUAL 4-SPEED - LHD 7 - MANUAL 5-SPEED - RHD 8 - MANUAL 5-SPEED - LHD</p>
<p>1 - MANUAL 4-SPEED - RHD 3 - AUTOMATIC - RHD</p>	<p>2 - MANUAL 4-SPEED - LHD 7 - MANUAL 5-SPEED - RHD 8 - MANUAL 5-SPEED - LHD</p>		
<p style="text-align: center;">10th PREFIX LETTER (MODEL CHANGE)</p> <p>A - MODEL YEAR</p>	<p style="text-align: center;">11th PREFIX LETTER (ASSEMBLY PLANT)</p> <p>M - COWLEY</p>		

CODE EXAMPLE



ALWAYS QUOTE THESE PREFIXES WITH VEHICLE IDENTIFICATION NUMBERS